

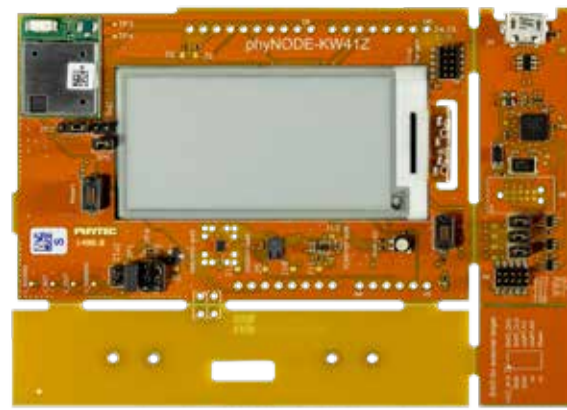
IoT-Enablement-Kit 4

Get your wireless sensor IoT-Kit powered up and running in just a few simple steps.

KIT CONTENTS: phyNODE® -KW41Z mit phyWAVE®-KW41Z

1) Preparing the Hardware

1. Prerequisites: Android Smartphone (Requires Android 5.0 and up)
2. Source code of the phyNODE Android app is available on Github
Open the Github page and search for „phynode-android-app”.
You can find the app in the „PHYTEC Messtechnik GmbH” Github page.



Micro-USB Cable

CR2032 Battery, AA with clips

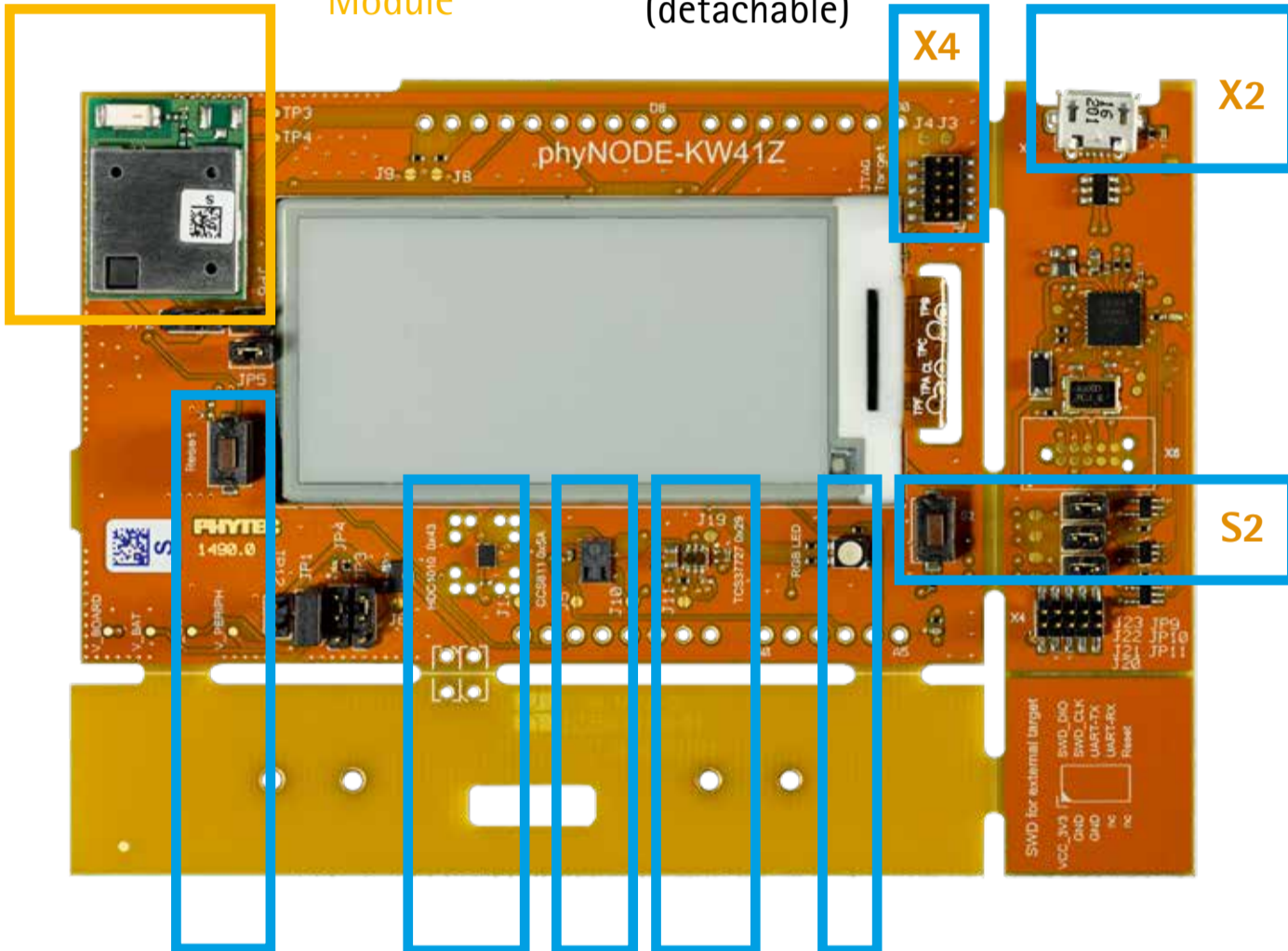
Lanyard clip

Arduino Shields slot



phyWAVE-KW41Z Wireless Module

Universal Debugger (detachable)



Power

User-Button

Battery Mount CR2032

AA battery holder or Lanyard loop

Reset-Button

Temperature Humidity Sensor
HDC1010

Air Quality Sensor
CCS811

Color Light Sensor
TCS37727

RGB-LED

PHYTEC

Germany
PHYTEC Messtechnik GmbH
D-55129 Mainz
t +49 6131 9221-32
f +49 6131 9221-33
www.phytec.de
www.phytec.eu

France
PHYTEC France SARL
F-72140 Sillé le Guillaume
t +33 2 43 29 22 33
f +33 2 43 29 22 34
www.phytec.fr

USA
PHYTEC America LLC
Bainbridge Island, WA 98110
t +1 206 780 9047
f +1 206 780 9135
www.phytec.com

India
PHYTEC Embedded Pvt. Ltd.
Koramangala
Bangalore 560095
t +91 80 408670-46/49
www.phytec.in

China
PHYTEC Information Technology Co. Ltd.
Nanshan District, Shenzhen
518026 PRC
t +86 755 6180 2110
www.phytec.cn

L-847e_0

Quick Start Guide

IoT-Enablement-Kit 4

2) Prepare your Smartphone & phNODE

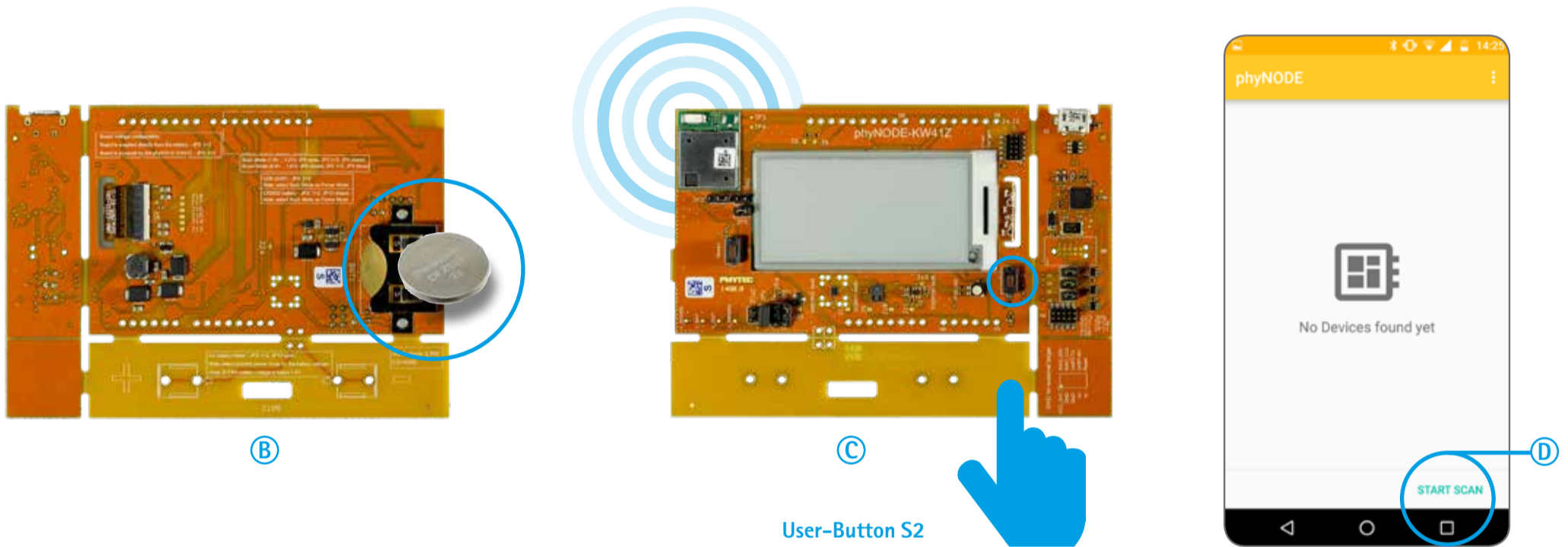
Prepare your Android Smartphone

1. Open Google Play Store with your Android smartphone with Android 5.0 or up and search for „phyNODE“ (A).
2. Install „phyNODE“ App to your smartphone and open.

Start your phyNODE Board

3. Insert the CR2032 Coin Cell (B).
4. Press Button S2 once (C).

Now your phyNODE Board is active and in Bluetooth Low Energy Advertising Mode.



3) Getting Connected

1. In the open phyNODE Android app click **START SCAN** to scan for phyNODE Boards in Advertising Mode (D).
2. The App will find one active phyNODE board (E).
3. Click the phyNODE-ePaper that is being listed in your App. You can add all details for writing new data to the passive display of the phyNODE (F).

Updating the passive display of the phyNODE

4. Fill the fields in the form with your Title, Name and Department
5. You can set a monochrome 125*25 pixel picture for your company logo optional
6. A preview of the passive display contents will be shown in the upper area of the App (G).
7. Click „SEND“ to upload the picture to the phyNODE (H).

After sending the data to the phyNODE, the passive display will update its content.

